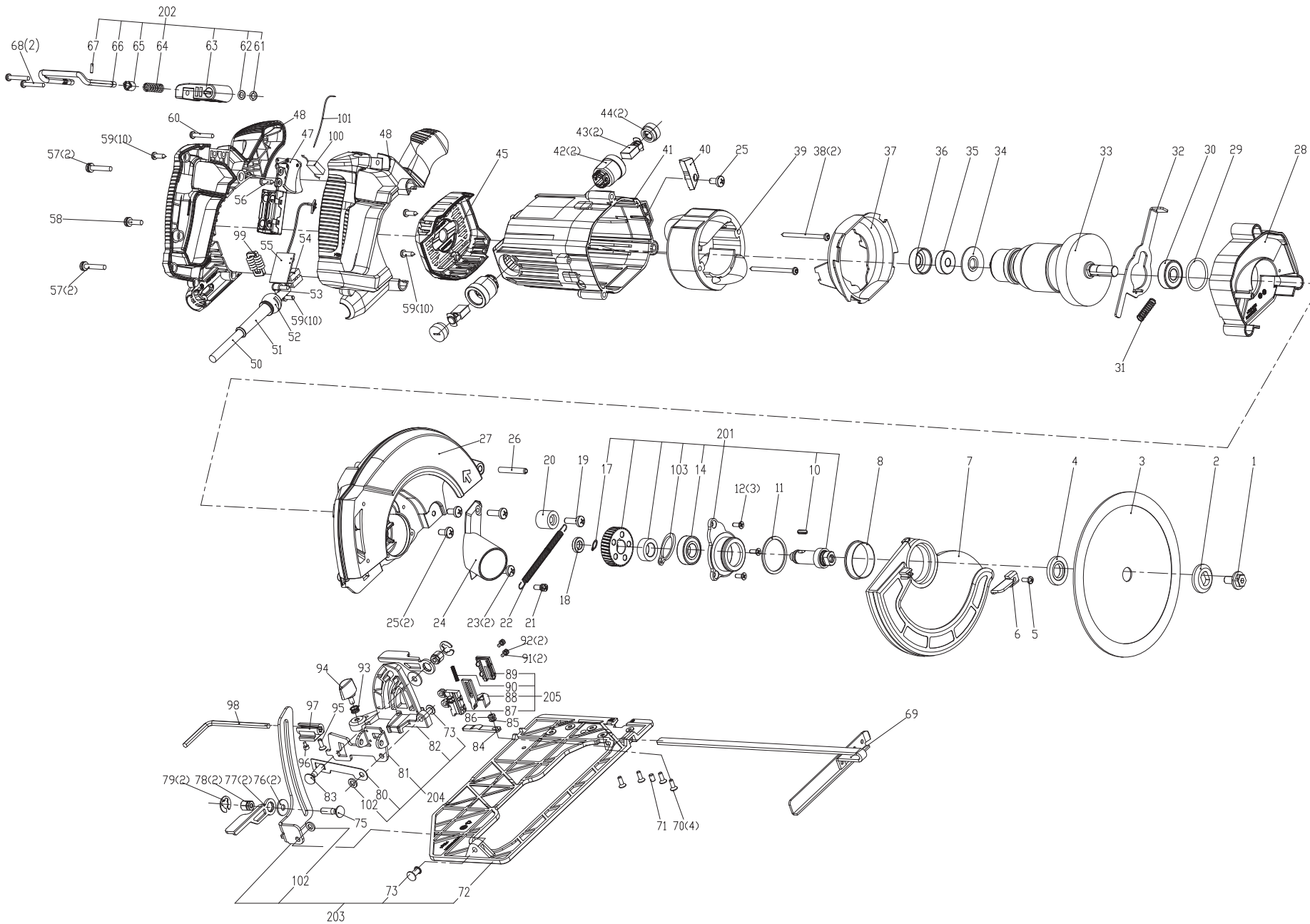


# DX56

Version:00  
Date:200826



Model No	Position No	Material No	Description	QTY	Remarks	Recommended order ratio	Serial No
DX56	1	50042188	Flange Screw	1		1%	
DX56	2	50014994	Outer Flange	1			
DX56	3	50042209	Saw Blade	1		5%	
DX56	4	50014996	Inner Flange	1			
DX56	5	60052511	Screw M4X10	1			
DX56	6	50042189	Lever I	1			
DX56	7	50042193	Lower guard	1			
DX56	8	60034427	Isolated cover	1			
DX56	10	60028385	Key	1			
DX56	11	60034431	Ring	1			
DX56	12	60045075	Screw M4X14	3			
DX56	14	50003183	Bearing	1			
DX56	17	50003095	Ring	1			
DX56	18	60047951	Ball bearing 689-2Z	1			
DX56	19	50002886	Self tapping screw	1			
DX56	20	50010550	Rubber ring	1		3%	
DX56	21	50020930	Screw	1			
DX56	22	50043128	Extension spring	1		1%	
DX56	23	50042122	Screw M4X10	2			
DX56	24	50042197	Dust Tube	1	for EU,UK,BR,AR,RU	3%	
DX56	24	60026234	Adapting Piece	1	for AE,BR,AR		
DX56	25	50026215	Self Tapping Screw	3			
DX56	26	60041335	Spring Pin	1			
DX56	27	50042179	Guard	1			
DX56	27	50047487	Fixed Guard Assembly	1			(AR),(AE-BS)
DX56	28	50042178	Baffle	1			
DX56	29	50014848	O-ring	1			
DX56	30	50047485	Ball Bearing 6201	1		3%	
DX56	30	50003166	Bearing	1		3%	(AR),(AE-BS)
DX56	31	50015003	Compression Spring	1			
DX56	32	50042186	Lock Lever	1			
DX56	33	50043388	Rotor	1		3%	
DX56	34	50042183	Dust ring	1			
DX56	35	50003149	Bearing	1		3%	
DX56	36	60042720	Bearing Sleeve	1			
DX56	37	50042201	Baffle	1			
DX56	38	50038703	Self Tapping Screw ST4.2X50	2			
DX56	39	50043389	Stator	1		3%	
DX56	40	50042185	Cover I	1			
DX56	41	50042198	Housing	1			
DX56	42	50016191	Brush holder	2		3%	
DX56	43	50043393	Carbon brush(pair)	1		3%	
DX56	44	50016190	Brush cover	2			
DX56	45	50042191	Rear Cover	1			
DX56	46	50042195	Handle Assembly	1			
DX56	47	50042180	Switch	1		5%	
DX56	50	50042384	Power Cord	1	for UK,AE-BS	1%	
DX56	50	50042181	Power Cord	1	for EU,AE-VDE	1%	
DX56	50	50047486	Power Cord	1	for AR	1%	
DX56	50	50046348	Power Cord	1	for BR	1%	
DX56	50	50050013	Power Cord	1	for RU	1%	
DX56	51	60039856	Cable Protector	1			
DX56	52	50043390	Ball Protector	1			
DX56	53	50000837	Cord clamp	1			
DX56	54	60044246	Terminal Port	2			
DX56	55	50042192	PCB	1			
DX56	56	60032485	Self Tapping Screw	1			
DX56	57	50042202	Screw assembly M5X50	2			
DX56	58	50002772	Screw washer assembly	1			
DX56	59	60042358	Self Tapping Screw	10			
DX56	60	60050669	Self Tapping Screw	1			
DX56	61	50037241	Retaining Ring	1			
DX56	62	60050096	Washer	1			
DX56	63	50041998	Location Block	1			
DX56	64	50041974	Spring	1			
DX56	65	50041989	Orientation Sleeve	1			
DX56	66	50043031	Hook wire	1		1%	
DX56	67	50041976	Taper Pin	1		1%	
DX56	68	50042184	Self Tapping Screw ST4.8X32	2			
DX56	69	50010516	Guide ruler	1		3%	
DX56	70	50002645	Screw	4			
DX56	71	50002681	Screw	1			
DX56	72	50043032	Base Plate	1			
DX56	73	50002965	Rivet	2			
DX56	75	50042190	Bolt	1			
DX56	76	50003043	Washer	1			
DX56	77	50042102	Lever II	2			
DX56	78	50042109	Nut	2			
DX56	79	50003114	E-ring	2			
DX56	80	50043035	Baffle	1			
DX56	81	50043036	Angle Bracket	1			
DX56	82	50043037	Front Bracket	1			
DX56	83	50038386	Screw	1			
DX56	84	50015171	Pointer Cam	1			
DX56	85	50021254	Washer	1			
DX56	86	50042118	Screw M4X6	1			
DX56	87	50040801	Pointer Seat	1			
DX56	88	50042098	Pointer	1			
DX56	89	50040799	Pointer Cover	1			
DX56	90	50040800	Sping	1			
DX56	91	60030964	Washer III	2			
DX56	92	50040821	Screw M3*8	2		1%	
DX56	93	60042796	Spring	1			
DX56	94	50042104	Lock button	1			
DX56	95	50042100	Self Tapping Screw ST4.2X8	1			
DX56	96	50042107	Rubber stoppr	1			
DX56	97	50042114	Wrench Positioning Block	1			
DX56	98	50018339	Spanner	1			
DX56	99	50042199	Inductance	1			
DX56	100	50042182	Capacitor	1			
DX56	101	50042200	Inner wire	1			
DX56	102	50043034	Washer	2			
DX56	103	60039831	Retaining Ring	1			
DX56	201	50042194	Fore Cover Set	1		3%	
DX56	202	50042028	Hook Set	1			
DX56	203	50042196	Base Plate Set	1		1%	
DX56	204	50042101	Angle Bracket Set	1		1%	
DX56	205	50043391	Pointer Set	1			